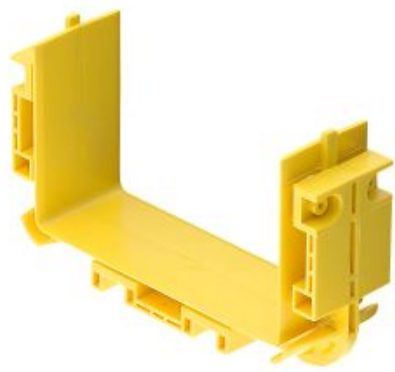


Snap-on Joint Raceway 100x100



PRODUCT\_IMAGE

DESCRIPTION

For a solid and smooth linking of main ducts and other components. One snap-on joint is required on each end for the horizontal and vertical elbows and also for the cross and T-joints.  
Color: yellow.  
Material: plastic PC/ABS (halogen-free, flame-retardant).

MECHANICAL DATA

DESCRIPTION	VALUE / VALUE RANGE
Dimensions	100.0 mm x 100.0 mm / 3.937 in x 3.937 in (W x H)
Color Code RAL	1021 Rape yellow
Material	plastic: PC / ABS (halogen-free, flame-retardant)